

We change families "Previous work placements weren't suitable due to lack of support that he now receives. I have found that he is well settled and has made friends." **Parent**

We change lives "It raised our awareness of living with special needs and made us aware of people's limitations, but in a good way. She helped with the workload and is like any other member of staff, she is great with customers and very chatty." **Employer**

Our year to date

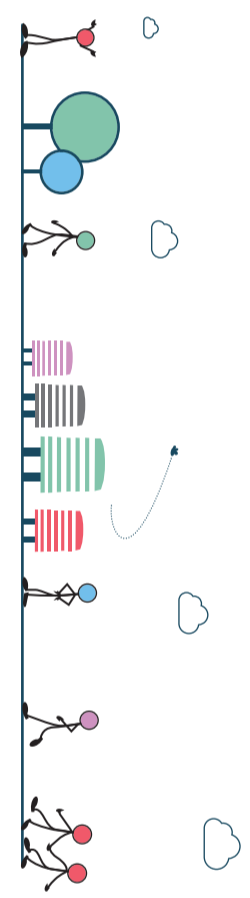
2015 has seen NOW Group and its social enterprises continue to build on the success of the previous year when we were named NI Social Enterprise of the Year, the highest regional accolade for the sector.

We expanded our services to include two innovative new offerings: Transition II is a five-day activity-based programme for 18-30 year olds who have a learning disability and are from the Belfast area, while the Educational & Career Guidance Service helps clients to explore all their career options so they can make an informed decision about their future.

We also opened up a new city centre location on Grosvenor Road called The Hive, which is the base for our Transition, Volunteering and Youth Services. The Hive is used as a community space by a multitude of cross-sector organisations, groups and businesses and has allowed NOW Group to build vital connections and enhance partnership working.

Our social enterprise subsidiary Loaf Catering & Cafes continued to bang the drum for the #Bugsocial ethos in 2015 with the opening of a new Café & Bakery on the site of a derelict, burnt-out bar in West Belfast. The Café & Bakery will generate 10 jobs and 100 training opportunities for people with learning difficulties over the next year.

We're a social enterprise that supports people with barriers to employment and learning into jobs with a future.



T 028 9043 6400
W www.nowgroup.org
E /NOW_Group **F** nowgroup.org
SEARCH: nowgroup

"Our most important people tell us we make an impact and we measure it."

This project is part-financed by the European Social Fund and the Department for Employment and Learning



IMPACT

Impact Card 2014 - 2015





Our services have saved **£128,139** with reduced need for day care places

£20,013 saved in benefits

And we can make the sun smile #success

we generated **£8** in social value

For every **£1** invested into NOW Group

24 People into voluntary work

£279,167 Earned in wages

44% Increase on last year

10% Increase on last year

32 People into paid jobs

78 Youth Service

60 Money for Life

49 Catering

174 Skills

Achieved by **278** people

361 Qualifications achieved

9 QUALIFICATIONS AND JOBS

7 OUR SUCCESS

Social Enterprise of the year NI 2014 (Shortlisted UK)

CEO Female Social Entrepreneur of the Year 2014 (Shortlisted UK)

8 TELLING OUR STORY

42 Newspaper articles written about us

3 NEWS Featured in three radio interviews

55% Increase in Twitter followers

37% Increase in Facebook Likes

CAFÉ AND BAKERY Purchased, redevelopment, doors opened and trading

The Bobbin Contract secured for The Bobbin Café Belfast City Hall

6 SOCIAL ENTERPRISE

20 New employees

150% Increase in Loaf's turnover

5 WE ARE GROWING

9 MONEY FOR LIFE CHALLENGE

300 Young people were engaged as part of the 2015 Challenge

40 Groups awarded grants to make their money-saving projects a reality

£20k GRANTS AWARDED

4 TRANSITION

52 School-aged young people supported by our Transition Service

16 Young people engaged through our new innovative Transition II Service

129 Young people into training, education or paid employment

102 Young people & youth volunteers engaged

2 YOUTH INITIATIVES

£275,000 saved to local services in supporting youths into training & employment

GOLD DUST

Equating to **£40,498** Value to the local community

4,361 Hours in total

70 Volunteers donated

OUR VOLUNTEERS

they are out of this world

Start here

1 OUR PEOPLE

435 People supported

10% Increase

YE00000!

©Copyright: NOW Group

"Our most important people tell us we make an impact and we measure it."

